



DEEP CLEAN GUIDE FOR WORKPLACES



Deep Cleaning - Controlling The Risk



Whenever and wherever cleaning is taking place, it is extremely important that all potentially harmful dirt and bacteria are prevented from travelling around the building.

One of the ways in which such bacteria can be transmitted throughout a building is via the same cleaning equipment and solutions being used in areas of different use. Therefore, in order to minimise the risk of infection, cleaning operatives must adopt effective infection control procedures.

COVID-19

The infection risk from coronavirus (COVID-19) following contamination of the environment decreases over time. It is not yet clear at what point there is no risk. However, studies of other viruses in the same family suggest that, in most circumstances, the risk is likely to be reduced significantly after 72 hours.



Personal protective equipment (PPE)



Ensure your staff are protected from health & safety risks within the workplace.



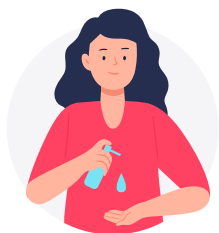
Government guidance advises the minimum PPE to be worn for cleaning an area where a person with possible or confirmed coronavirus (COVID-19) is disposable gloves and an apron. Hands should be washed with soap and water for 20 seconds after all PPE has been removed.



For high risk applications where there is visible contamination with body fluids, additional protection is required to cover the cleaner's eyes, mouth and nose.

Non-healthcare workers should be trained in the correct use of a surgical mask, to protect them against other people's potentially infectious respiratory droplets when within 2 metres and how to fit the mask correctly.

How to wear a face mask correctly...



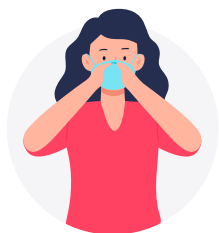
Wash your hands with soap and water or use hand sanitiser



Hold the mask with the inside facing you



Place the ear loops around each ear



Mold the stiff edge to the shape of your nose



Pull the bottom of the mask over your mouth and chin



Guide to FACE MASK Tests & Requirements

Choose the correct mask for the task!

Medical Face Mask - Standards/Directives/Legislative requirements

- All products must be **CE marked** which shows the product meets EU safety, health and environmental requirements
- Product and packaging must conform to **Medical Devices Regulation 2017/745**
- EN 14683:2019** Requirement and test methods on medical face masks
- Product and packaging must be latex free where possible
- The government guidance for healthcare professionals is Type IIR face masks

	Low	Medium	High
Fluid/Splash resistance	≤ 30 mmHg	≤ 100 mmHg	≤ 1,325 mmHg
BFE % Backward Filtration Efficiency	≥ 98%	≥ 98%	≥ 98%
Differential Pressure	≤ 40 Pa/cm²	≤ 40 Pa/cm²	≤ 40 Pa/cm²
Flammability	Class I	Class II	Class III
EN 14683 Rating	Type I	Type II	Type IIR

	Performance explanation
Fluid/Splash resistance	Non-resistance to penetration by synthetic blood under pressure (penetration - higher resistance - higher protection)
BFE % Backward Filtration Efficiency	Percentage of particles blocked out of spray rate of 1 L.p.m. @ 50 mmHg (p)
Differential Pressure	Pressure drop across mask, or resistance to air flow in Pa/cm²
Flammability	Greater resistance = better protection but less breathability. Measure the flammability of the mask material.

www.jangro.net

Hand Hygiene

Good hand hygiene is the primary, most important method of preventing cross contamination and the spread of germs and bacteria.

Handwashing is particularly important when carrying out cleaning in areas such as care homes, schools and hospitals and you should never underestimate the importance of hygiene in the workplace.

It is normal practice throughout the cleaning and catering industries to provide protective gloves to staff when carrying out most tasks. What should not be overlooked is the fact that hands should be thoroughly cleaned before and after gloves are worn.

Why is hand hygiene so important?



Effective hand washing removes or destroys harmful bacteria picked up by the hands and also reduces the amount of bacteria that is normally present on the skin. The aim of good hand washing practices is to ensure your own protection and prevent the transfer of any harmful bacteria to other people. The important thing to remember is that good technique is more important than the type of hand cleanser used.

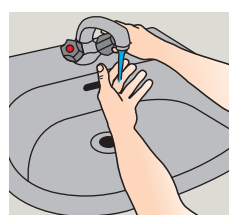
Remember ALWAYS wash your hands whenever:

- you have had contact with any bodily fluids
- you have used or cleaned the toilet
- you have sneezed, blown or wiped your nose
- you have covered your mouth with your hand while coughing or sneezing
- before eating, handling and preparing foods
- your hands feel or look dirty
- you have handled or cleaned up after any animals

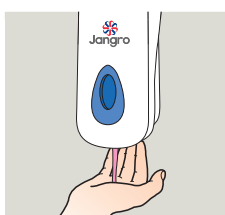
Hand Washing

The correct hand-washing technique.

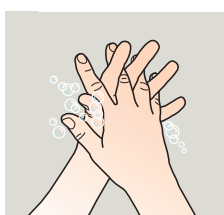
When washing hands, the following points should be included and adopted by all staff:



1 Remove any jewellery from hands and wrists to allow effective cleaning. Wet hands with clean water.



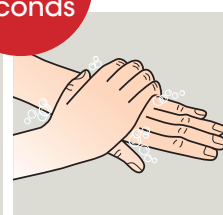
2 Apply enough cleanser to ensure it produces a good thick lather.



3 Rub hands to produce lather.



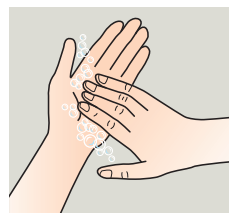
4 Palm to palm.



5 Right palm over the back of the left hand and vice versa.



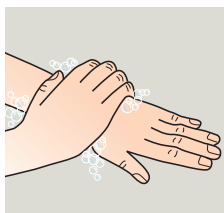
6 Intertwine the fingers of the right hand over the left and vice versa. Pay particular attention to the areas between fingers and finger nails.



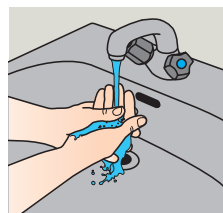
7 Rotationally rub backwards and forwards with clasped fingers of the right hand in the left palm. Change hands and repeat.



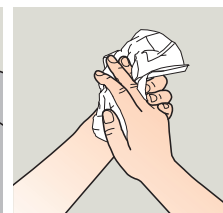
8 Rotationally rub the right thumb clasped in the left palm, change hands and repeat.



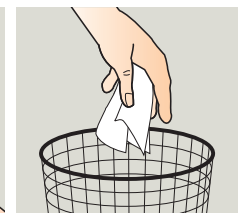
9 Grip the left wrist and work cleanser into the skin. Do the same with the right wrist.



10 Rinse off all traces of lather with clean water.



11 Dry hands thoroughly with a disposable paper towel.



12 Discard paper towel in waste bin, avoid touching the bin.

Wash for 20 seconds

What hand cleanser should I use?

Try to avoid using tablet soap. If you must use it, make sure that the soap is cleaned and dried and changed regularly. Also, soap dishes that retain fluid should not be used under any circumstances.

Liquid or foam hand soap from a dispenser is the best form of cleaner and Jangro provide a vast range from which customers can select the product that best suits their needs. Your local Jangro representative will provide further advice on selecting the correct product to use.

What other steps should be considered to maintain good hygiene?

The regular application of hand moisturising cream will help prevent hands becoming chapped. Staff should be instructed to wear all personal protective equipment provided to protect their hands.

Finally, any cuts or abrasions to the hands should be covered with a clean water-proof dressing, which should be replaced regularly until fully healed.

Hand Sanitising



Highly effective skin disinfectant, which contains 70% alcohol and moisturiser. Evaporates from hands without leaving residue or odour.



XA601



BK140

Jangro Alcohol Gel Hand Rub

Alcohol based skin disinfectant. Use after routine hand washing and when soap or water is not readily available. Will evaporate from hands and kill bacteria almost immediately without leaving a residue or odour.

BK140-5 5 litre
BK140-50 500ml

Hand Sanitising Dispenser Back Board

Dispenser sold separately.

XA601 250x350mm

Jangro Automatic Sanitiser Dispenser & Stand

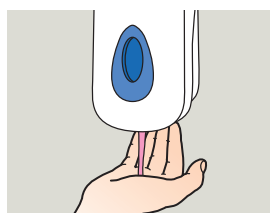
- Comes with 1ltr bulk fill automatic dispenser
- Suitable for alcohol and gel sanitiser
- Light and durable aluminium unit
- Size - 50x40x155cm

BK751

Scientifically proven to kill 99.9% of germs without water



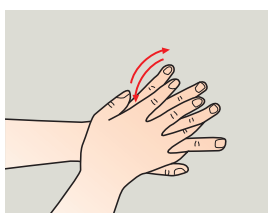
When sanitising hands, the following points should be included and adopted by all staff:



1 Apply 2 - 3 pumps into clean, dry, cupped hands.



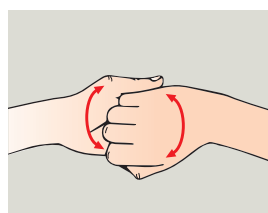
2 Rub hands palm to palm.



3 Rub back of each hand with palm of other hand with fingers interlaced.



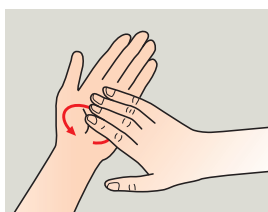
4 Rub palm to palm with fingers interlaced.



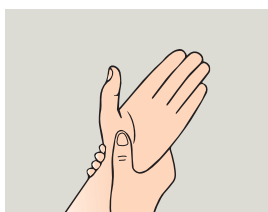
5 Rub with back of fingers to opposing palms with fingers interlocked.



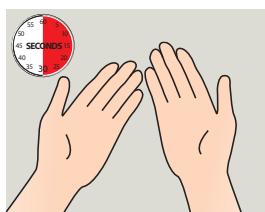
6 Rub each thumb clasped in opposite hand using rotational movement.



7 Rub fingers in opposite palm in a circular motion.



8 Rub each wrist with opposite hand.



9 Rub until hands are dry. Steps 1 - 8 should take at least 30 seconds.



BK140

COVID-19: Cleaning in non-healthcare settings



What you need to know....

- cleaning an area with normal household disinfectant after someone with suspected coronavirus (COVID-19) has left will reduce the risk of passing the infection on to other people
- wear disposable or washing-up gloves and aprons for cleaning. These should be double-bagged, then stored securely for 72 hours then thrown away in the regular rubbish after cleaning is finished
- using a disposable cloth, first clean hard surfaces with warm soapy water. Then disinfect these surfaces with the cleaning products you normally use. Pay particular attention to frequently touched areas and surfaces, such as bathrooms, grab-rails in corridors, stairwells and door handles
- if an area has been heavily contaminated, such as with visible bodily fluids, from a person with coronavirus (COVID-19), use protection for the eyes, mouth and nose, as well as wearing gloves and an apron
- wash hands regularly with soap and water for 20 seconds, and after removing gloves, aprons and other protection used while cleaning

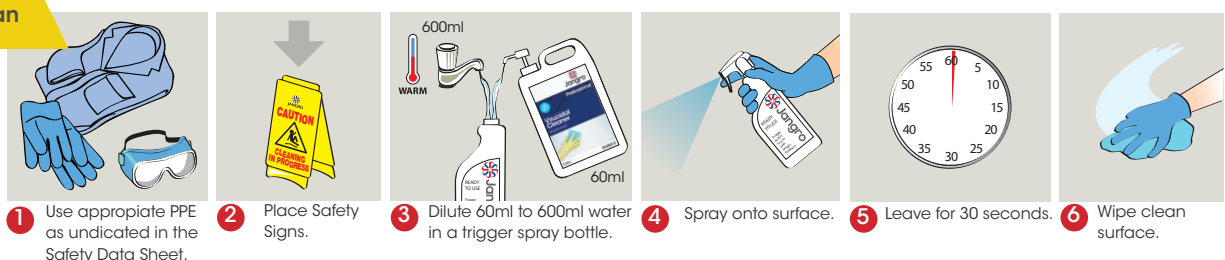
Don't forget frequently touched areas!



How to clean potential virus outbreak

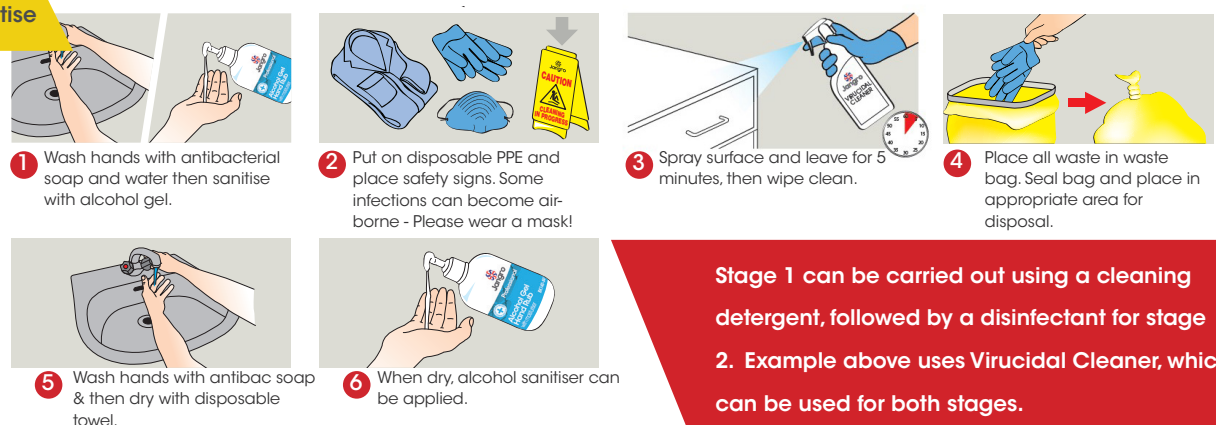
STAGE 1 - Clean

USING A CLEANING DETERGENT



STAGE 2 - Sanitise

USING A CLEANER DISINFECTANT



Stage 1 can be carried out using a cleaning detergent, followed by a disinfectant for stage 2. Example above uses Virucidal Cleaner, which can be used for both stages.

COVID-19: Cleaning in non-healthcare settings



Colour Coding

The aim of colour coding is to prevent cross contamination during the cleaning process. It is vital that an effective colour-coded system is implemented. There is no legislative requirement to operate a colour-coded cleaning regime. However, it is generally considered good practice to adopt such a scheme when cleaning commercial premises.

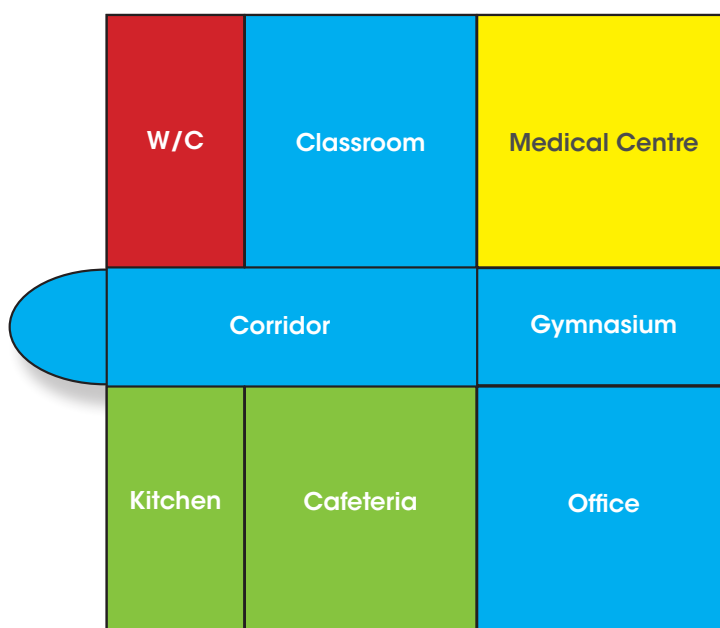
The cleaning industry has developed a widely used colour-coding system for all relevant cleaning equipment which should be used in the areas identified by the various colours used.



Although some companies will adopt systems that incorporate other colours, it is extremely important that once the colour has been designated to particular area, that it is strictly adhered to at all times.

Recommended Usage

- GENERAL LOW RISK AREAS
- GENERAL FOOD AND BAR USE
- GENERAL WASHROOM
- CLINICAL



COVID-19: Effective Cleaning Products



All germs, bacteria and viruses are, in most cases, invisible to the naked eye. Although we cannot see them, we all know they are there. We also know that if they are not removed or destroyed effectively, they will multiply or mutate, increasing the likelihood of an outbreak of infection. Therefore, it is important that the products that are utilised as part of the overall cleaning regime are effective.

Virucidal Cleaner

Process for Infection Control

Products used: Virucidal Cleaner, Medical Sanitiser/Cleaner Disinfectant

Infection Control - effective against bacteria including MRSA (EN1276)

1. Remove any visible dirt and debris from the surface with a disposable wipe.
2. Put on disposable PPE and place waste in a disposable bag.
3. Dilute the disinfectant with water in a ratio of 1:100.
4. Apply the disinfectant to the surface using a spray bottle or a disposable cloth.
5. Leave the disinfectant on the surface for the required contact time.
6. Remove any excess disinfectant with a disposable cloth.
7. Wash hands with soap and water.
8. Dispose of all waste in a disposable bag.

Cleaning potentially infectious areas of E-coli, Clostridium difficile or H.I.V (EN1276, EN13704, EN1650, EN14476, EN14675)

1. Remove any visible dirt and debris from the surface with a disposable wipe.
2. Put on disposable PPE and place waste in a disposable bag.
3. Dilute the disinfectant with water in a ratio of 1:100.
4. Apply the disinfectant to the surface using a spray bottle or a disposable cloth.
5. Leave the disinfectant on the surface for the required contact time.
6. Remove any excess disinfectant with a disposable cloth.
7. Wash hands with soap and water.
8. Dispose of all waste in a disposable bag.

Potential outbreak of Norovirus (EN1276, EN13704, EN1650, EN14476, EN14675)

1. Remove any visible dirt and debris from the surface with a disposable wipe.
2. Put on disposable PPE and place waste in a disposable bag.
3. Dilute the disinfectant with water in a ratio of 1:100.
4. Apply the disinfectant to the surface using a spray bottle or a disposable cloth.
5. Leave the disinfectant on the surface for the required contact time.
6. Remove any excess disinfectant with a disposable cloth.
7. Wash hands with soap and water.
8. Dispose of all waste in a disposable bag.

www.jangro.net **XA157**

TESTED AGAINST ENVELOPED VIRUSES

Public areas where a symptomatic individual has passed through and spent minimal time, such as corridors, but which are not visibly contaminated with body fluids can be cleaned thoroughly as normal.

All surfaces that the symptomatic person has come into contact with must be cleaned and disinfected, including:

- objects which are visibly contaminated with body fluids
- all potentially contaminated high-contact areas such as bathrooms, door handles, telephones, grab-rails in corridors and stairwells

Virucidal Cleaner Unperfumed

Powerful multi-purpose bactericidal cleaner and sanitiser. Kills Norovirus, E-coli, Salmonella typhimurium, Listeria monocytogenes H1N1 Influenza virus, HIV, Hepatitis C, MRSA & C. difficile. Passes EN 1276, 13704, 1650, 14476 & 14675. Bleach free, non tainting and unperfumed. Suitable for use in healthcare, catering, schools and high risk applications.

BA053-75 750ml ready to use
BA053-5 5 litre (Dilute 1:10)

Jangro Infection Control Wallchart

A wall chart providing illustrated guidance on how to clean infectious areas including E-coli, C.difficile, HIV and Norovirus.

XA157 A3

COVID-19: Effective Cleaning Products



Cleaning and Disinfection

Use disposable cloths or paper roll and disposable mop heads, to clean all hard surfaces, floors, chairs, door handles and sanitary fittings, following one of the options below:

- A virucidal cleaner which passes EN14476 and has been tested against enveloped viruses.
- Bleach based disinfectant at a dilution of 1,000 parts per million (PPM) available chlorine.
- An alcohol based disinfectant cleaner.

Follow manufacturer's instructions for dilution, application and contact times for all detergents and disinfectants



Virucidal Cleaner Unperfumed

Powerful multi-purpose bactericidal cleaner and sanitiser. Kills Norovirus, E-coli, Salmonella typhimurium, Listeria monocytogenes H1N1 Influenza virus, HIV, Hepatitis C, MRSA & C. difficile. Passes EN 1276, 13704, 1650, 14476 & 14675. Bleach free, non tainting and unperfumed. Suitable for use in healthcare, catering, schools and high risk applications.

BA053-75 750ml ready to use
BA053-5 5 litre (Dilute 1:10)



Jangro Cleaner Disinfectant

Disinfects, cleans and deodorises in one application. Will help prevent the spread of infection. Suitable on all washable surfaces. Ideal in schools, nursing homes, surgeries and wherever there is risk of infection. Kills MRSA and Shigella (the most common cause of dysentery). Passes EN 1276.

BA050-75 750ml
BA050-5 5 litre Dilute 1:25



1 tablet +
1 litre water =
1000ppm

Jangro Chlorine Tablets

Tablets give a measured dose of available chlorine, which can be used for the disinfection of equipment, work surfaces, hospital, medical, hotel, catering etc. Effective against fungi, spores and viruses (including HIV and Norovirus). Passes EN13704, EN14476, EN1040, EN13697, EN1276 and EN1650.

BC013 200 tablets



Enviro Cleaner Disinfectant Sachets

A QAC based cleaner disinfectant which contains deodoriser and perfume designed for cleaning and sanitising in hospitals, nursing homes and hotels where sanitation and the deodorising smells is important.

BB550 1x100 sachets Dilute 1:25

Enviro H6 General All Purpose Sanitiser

Concentrated, unperfumed multi-purpose disinfectant cleaner. Passes EN 1276.

BB456-1 1 litre

Sanitising for Catering



Cleaning and Disinfection



**QAC
FREE**

Jangro Premium Alcohol-Based Sanitiser

Ready-to-use, alcohol-based, disinfectant cleaner for use in the food processing, catering and healthcare industries. Suitable for use on hard washable surfaces, such as stainless steel, polished metal, painted surfaces, glass, most plastics and ceramics. Passes EN1276, EN13697 and EN1650.

BB008-75 750ml
BB008-5 5 litre



Kitchen Cleaner Sanitiser

Multi-purpose cleaner sanitiser and terminal disinfectant. Removes general soiling and kills a range of bacteria including MRSA. Unperfumed formulation makes it ideal for use in kitchens. Passes EN1276 in 30 seconds.

BB010-75 750ml
BB010-5 5 litre



Enviro K4 Kitchen Sanitiser

Concentrated unperfumed solution for multi-purpose cleaning and disinfecting.

BB470-1 1 litre



Surface Sanitising Wipes

An impregnated wipe with bactericidal solution for use in all food handling areas. Kills the bacteria that causes MRSA, E-coli and most other bacteria.

BB195 40 sheets
BB190 200 sheets



Virucidal Cleaner Unperfumed

Powerful multi-purpose bactericidal cleaner and sanitiser. Kills Norovirus, E-coli, Salmonella typhimurium, Listeria monocytogenes H1N1 Influenza virus, HIV, Hepatitis C, MRSA & C. difficile. Passes EN 1276, 13704, 1650, 14476 & 14675. Bleach free, non tainting and unperfumed. Suitable for use in healthcare, catering, schools and high risk applications.

BA053-75 750ml ready to use
BA053-5 5 litre (Dilute 1:10)



Disposable Wiping



Disposable Paper Wipes

Wiping is part of the everyday cleaning of all facilities. Jangro provides a range of disposable paper and non-woven wipes, colour-coded to prevent cross contamination.



Jangro Centrefeed Dispensers

Key lockable units available in plastic or stainless steel.

AH126 Stainless Steel
AH137 Plastic



Jangro Centrefeed Rolls

Blue or white rolls available in 1, 2 or 3 ply tissue. 6 rolls per case.



Hand Towel Dispensers

Key lockable units available in plastic or stainless steel.

AH110 Stainless Steel
AH106 Plastic



Paper Hand Towels

Hand towels are available in variants of c-fold, s-fold or z-fold. Colours in white, blue or green,



Premium Biowipe Plus

Heavy duty anti-bacterial cleaning cloth which has exceptional strength both wet and dry and has large holes which gives more wiping edges to remove stubborn marks which increases its wiping performance.

CG017 25 per pack



All Purpose Cloth

Non woven cloth with open cellular structure makes them very effective at collecting dirt particles, as well as removing stubborn stains.

CG005 50 per pack

Colour-Coded Equipment



Floor Care

Avoid creating splashes and spray when cleaning. Any cloths and mop heads used must be disposed of and should be put into waste bags as outlined below. When items cannot be cleaned using detergents or laundered, for example, upholstered furniture and mattresses, steam cleaning should be used. Any items that are heavily contaminated with body fluids and cannot be cleaned by washing should be disposed of.



Duo-Hygiene Bucket

Colour coded dual bucket with central wringer, separates clean and soiled mopping solutions for more hygienic cleaning. 14 litre (8 + 16L) capacity.

HB060 ● ● ● ●



Jangro Long Tall Sally Bucket & Wringer

26 litre capacity bucket and wringer combo with 3" castors (16 litre capacity working water). Features extra long handle allowing maximum pressure when wringing out mops.

HB025 Bucket and Wringer
HA003 Kentucky Mop Head
HA006 Kentucky Handle

● ● ● ●



Vileda Supermop Ag

Heavy duty non-woven material now contains silver (Ag) to inhibit bacterial growth on the mop by 99.99% and zig zag edges provide high absorption and 30% better dirt pick up. 10L Capacity.

HB300 Mop Head
HB301 Aluminium Handle
HB302 Bucket and Wringer

● ● ● ●



Vileda Ultraspeed Mini Kit

Innovative wringer, flat mop frame and microfibre mop pad. Kit includes 10L bucket, wringer, microlite mop pad and frame. Telescopic handle and SafeMop sold separately.

HB220 10 litre kit
HB224 Telescopic handle
HB222 SafeMop

● ● ● ●



Exel Mop Handle 54"

Aluminium mop handles with colour coded grips. Fits Exel mop heads.

HA025 ● ● ● ●



Exel Big White Mop

The big white mop head is a fantastic alternative to traditional mops, they are very light in use, highly absorbent and extremely cost effective. Fits handle HA025.

HA024 ● ● ● ●



Exel PY Mopping

Mop heads available in three sizes and colour-coded.

HA014 200 grm
HA015 250 grm
HA016 300 grm

● ● ● ●

Colour Coding Guide

- GENERAL LOW RISK AREAS
- GENERAL FOOD AND BAR USE
- GENERAL WASHROOM
- CLINICAL



Colour-Coded Equipment



Premier Hygiene Brushware

Designed to be robust enough to withstand extremely heavy use. All brushes may be autoclaved. A wide choice of colours available for the prevention of cross-contamination.



Premier Flat Sweeping Broom

All items are colour-coded.

- HP021 Soft 28cm
- HP022 Medium 28cm
- HP023 Stiff 28cm
- HP061 Medium 50cm
- HP064 Stiff 50cm



Lightweight Aluminium Handle

- HN090 127cm



Wire Hand Brush

- HN042 Stainless steel wire scratch 27.9cm



Short Handled Churn Brush

- HN077 Medium 25.4cm



Hand Brush

- HN083 Medium/Stiff 31.7cm



Deck Scrub

- HP067 Stiff 28cm



Hand Scrubbing Brush

- HN075 Stiff 15.4cm



Closed Dust Pan

- HN069 Medium 18cm



Colour Coding Guide

- GENERAL LOW RISK AREAS
- GENERAL FOOD AND BAR USE
- GENERAL WASHROOM
- CLINICAL



Laundry Products



Laundry

Wash items in accordance with the manufacturer's instructions. Use the warmest water setting and dry items completely. Dirty laundry that has been in contact with an unwell person can be washed with other people's items.

Do not shake dirty laundry, this minimises the possibility of dispersing virus through the air.

Clean and disinfect anything used for transporting laundry with your usual products, in line with the cleaning guidance above.

Premium Laundry Care Chart

Provides guidance on good laundering procedures.

XA158 A3

Good Laundering Procedures

WASH PROGRAMMES

- Standard Wash - 40°C
- Red Bag - 71°C
Linen (stucc wash)
- Red Bag - 40°C
Personal Clothes (Fabric)
- Towels - 40°C
- Kylie Wash - 60°C
- Stained Wash - 40°C
(Low Temperature Laundry Detergent)

PROCEDURES

- PRE-SORTING**
On arrival in the laundry, items should be pre-sorted into the bins provided.
 - Cottons
 - Polycottons/colours
 - Delicates, woolsens etc.
 - White work should be separated from colours
 - Heavily soiled items should be separated from lightly soiled items. These will require different wash procedures. i.e. sluce work.
- LOADING LEVELS**
 - Do not under load the machine. An under loaded machine costs as much to run as a fully loaded machine. Wait for a full load.
 - Do not overload the machine. An overloaded machine will produce poor results and items will require re-washing. Load the machine to its correct capacity.
 - A fully loaded machine should still be a loose one, with plenty of extra space. Do not fill up that empty space. NOTE: for polycotton items, load machine to two thirds capacity.
- PROGRAMME SELECTION**
Select the correct programme for the type of wash required - consult the process wall chart. Failure to choose the appropriate programme will mean that items are incorrectly washed or may suffer damage.
- COOLDOWN**
Cool down of polycotton items helps prevent thermal shock and permanent creasing.
- CLEANDOWN**
At the end of each working day the following tasks should be carried out:
 - Switch off all equipment
 - Wipe inside and outside of the washing machine
 - Leave the washing machine door open
 - Check levels in product containers and replace if necessary
Follow steps a - c for dryers.
- CHANGING PRODUCTS**
 - Remove lance from empty container
 - Insert lance into new container, ensuring the product is the same type
 - When decanting product residue, use a clean funnel
 - Replace the cap once the product has been changed

Ensure safety data sheets and risk assessments are up to date for any chemical used

DO NOT MIX CHEMICALS
ALWAYS WEAR RUBBER GLOVES AND SAFETY GLASSES WHEN CHANGING PRODUCT CONTAINERS

Bug Kill for high risk application

Scientifically proven to destroy:

- ✓ C. difficile
- ✓ MRSA
- ✓ H1N1 virus

Premium Fabrix Laundry Liquid

A liquid laundry detergent which is scientifically proven to destroy viruses such as H1N1 swine flu virus, C. difficile spores and MRSA at temperatures as low as 30°C.

BP220-5 5 litre
BP220-10 10 litre



Destroys viruses at 30°C

Laundry Products



Outstanding results first time...



PREMIUM RANGE

- ✓ Performance
- ✓ Energy savings
- ✓ Kills bacteria



Premium Bio Laundry Liquid

A biological laundry liquid for whites and colours with built in deodoriser. Specially formulated to give outstanding results.

BP210-5 5 litre
BP210-10 10 litre



Premium Non Bio Laundry Liquid

A non-biological laundry liquid for whites and colours with built in deodoriser. A delicate formulation makes this an ideal choice for sensitive skin.

BP215-5 5 litre
BP215-10 10 litre



Premium Fabric Softener

A concentrated conditioner that softens and reduces static, with the benefit of quick dry and easy iron features. High quality fragrance imparts freshness for several days.

BP230-5 5 litre
BP230-10 10 litre



Premium Low Temperature Laundry Destainer

A powerful destainer that starts working from only 20°C, which saves energy and time. Tough on stains but gentle on fabrics. Suitable for whites and colours.

BP240-5 5 litre
BP240-10 10 litre



Premium Peroxide Laundry Destainer

An effective destainer, particularly when washing at 60°C and above. Removes Stubborn bleachable stains including tea, coffee and wine. Suitable for whites and colours.

BP245-5 5 litre
BP245-10 10 litre



Laundry Bags

Plastic bags designed so that soiled or contaminated clothing does not have to be handled in the laundry. They feature a red strip along their length which dissolves in water releasing the contents safely when the wash starts.

CM400 Pack of 200 18"x28"x38"
CM401 Pack of 200 18"x28"x28"

Waste Disposal



Efficient Waste Disposal

The key to preventing the spread of infection effectively is prompt and efficient removal of waste. All companies charged with handling waste, must develop rigorous systems that ensure that waste is disposed of promptly, effectively and correctly.

Effective waste disposal procedures will go a long way to reducing the risks associated with the spread of bacteria and infection.

Waste from possible cases and cleaning of areas where possible cases have been (including disposable cloths and tissues):

1. Should be put in a plastic rubbish bag and tied when full.
2. The plastic bag should then be placed in a second bin bag and tied.
3. It should be put in a suitable and secure place and marked for storage until the individual's test results are known.

Waste should be stored safely and kept away from children. You should not put your waste in communal waste areas until negative test results are known or the waste has been stored for at least 72 hours.

- if the individual tests negative, this can be put in with the normal waste
- if the individual tests positive, then store it for at least 72 hours and put in with the normal waste

If storage for at least 72 hours is not appropriate, arrange for collection as a Category B infectious waste either by your local waste collection authority if they currently collect your waste or otherwise by a specialist clinical waste contractor. They will supply you with orange clinical waste bags for you to place your bags into so the waste can be sent for appropriate treatment.



Yellow Clinical Sacks

Used for incineration. Bags are supplied on a roll or flat packed. Various sizes and quantities available.



Orange Clinical Sacks

Alternative treatment/specialised waste. All bags supplied on the roll. Various sizes and quantities available.



Yellow Tiger Striped Clinical Sacks

Non-clinical offensive waste. All bags supplied on the roll. Various sizes and quantities available.



Sackholder Frame

Colour Coded open frame sackholders in blue, green, red, yellow & white, with a high quality white polyester finish frame.

CB060



Removable Sack Holder

Hands free sack retention frame with soft closing lid. Fire retardant to comply with the Department of Health's 'Healthcare Fire Safety (HTM-05-03)' policy. Available in 23ltr, 42ltr or 75ltr.

CB066

Back to Work... With a difference



Ensure workstations are kept hygienically clean

Before workers, customers, or visitors return, premises should undergo a deep clean to eliminate any trace of bacteria. Whilst the risk of COVID-19 surviving on surfaces is likely to be reduced significantly after 72 hours, other harmful bacteria may still be present (MRSA, for example, can live on surfaces for weeks!). If they are not removed or destroyed effectively, they will multiply or mutate, increasing the likelihood of an outbreak of infection.

Operatives should be encouraged to keep their individual workspace hygienically clean with regular cleans carried out throughout the day. The use of disposable cloths or paper roll to clean work surface together with gloves and a ready to use solution of disinfectant. Training should be provided to ensure each individual is aware how to use cleaning products correctly. Jangro provide training courses through www.jangrolms.net which cover introduction to cleaning and COSHH Awareness.

As well as the usual tasks on the cleaning check list (such as washrooms, flooring etc.), operatives should pay special attention to high traffic touch points within a facility. Lift buttons, telephones, and door handles are all places that can transfer harmful bacteria to hands, and, in turn, be moved onto new surfaces or transmitted to other people.



Here are some ideas to help you make the work environments safer for employees:

- Encourage regular hand washing
- Place hand sanitiser on individuals desks
- Provide a solution of ready to use disinfectant, cleaning cloth and gloves

Another tip to avoid busy canteen areas, is to provide refreshment facilities for each workstation to reduce members of staff spreading germs to each other.



Online training for staff -
www.jangrolms.net

Display Posters



Wall Charts

Process for Infection Control

Products used: Virucidal Cleaner, Medical Sanitiser/Cleaner Disinfectant

Infection Control - effective against bacteria including MRSA (EN1276)

1. Wash hands with antiseptic soap and water for 20 seconds.
2. Put on disposable gloves and clean surface with virucidal gel.
3. Rub on disposable PPE and clean surface with virucidal gel.
4. Rub on PPE and other hazardous waste in a secure waste bin.
5. Wash hands with antiseptic soap and water for 20 seconds.

Cleaning potentially infectious areas of E-coli, Clostridium difficile (EN13704, EN1650, EN14476, EN14675)

1. Wash hands with antiseptic soap and water for 20 seconds.
2. Put on disposable PPE and clean surface with virucidal gel.
3. Rub on PPE and other hazardous waste in a secure waste bin.
4. Wash hands with antiseptic soap and water for 20 seconds.

Potential outbreak of Norovirus (EN1276, EN13704, EN1650, EN14476)

1. Wash hands with antiseptic soap and water for 20 seconds.
2. Put on disposable PPE and clean surface with virucidal gel.
3. Rub on PPE and other hazardous waste in a secure waste bin.
4. Wash hands with antiseptic soap and water for 20 seconds.

www.jangro.net

Process For Infection Control

For use with Virucidal Cleaner.

XA157 A3

Process for Infection Control

Products used: Chlorine Tablets, Medical Sanitiser/Cleaner Disinfectant

Infection Control - effective against bacteria including MRSA (EN1276)

1. Wash hands with antiseptic soap and water for 20 seconds.
2. Put on disposable PPE and clean surface with virucidal gel.
3. Rub on PPE and other hazardous waste in a secure waste bin.
4. Wash hands with antiseptic soap and water for 20 seconds.

Cleaning potentially infectious areas of E-coli, Clostridium difficile or H1V

1. Wash hands with antiseptic soap and water for 20 seconds.
2. Put on disposable PPE and clean surface with virucidal gel.
3. Rub on PPE and other hazardous waste in a secure waste bin.
4. Wash hands with antiseptic soap and water for 20 seconds.

Potential outbreak of Norovirus

1. Wash hands with antiseptic soap and water for 20 seconds.
2. Put on disposable PPE and clean surface with virucidal gel.
3. Rub on PPE and other hazardous waste in a secure waste bin.
4. Wash hands with antiseptic soap and water for 20 seconds.

www.jangro.net

Process For Infection Control

For use with Chlorine Tablets

XA169 A3

Sanitise your hands

Stop Cross Contamination

1. Rub hands palm to palm.
2. Rub back of each hand with palm of other hand with fingers interlaced.
3. Rub palm to palm with fingers interlaced.
4. Rub with back of fingers to opposing palm with fingers interlaced.
5. Rub each thumb clasped in opposite hand using rotational motion.
6. Rub each wrist with opposite hand.
7. Rub with hands one dry (step 2 - 7 should take at least 20 seconds).

www.jangro.net

Sanitise Your Hands Guide

XA185 A4

The correct hand-washing technique

Task Card

1. Rub hands palm to palm.
2. Rub back of each hand with palm of other hand with fingers interlaced.
3. Rub palm to palm with fingers interlaced.
4. Rub with back of fingers to opposing palm with fingers interlaced.
5. Rub each thumb clasped in opposite hand using rotational motion.
6. Rub each wrist with opposite hand.
7. Rub with hands one dry (step 2 - 7 should take at least 20 seconds).

www.jangro.net

Hand Washing Guide

XA159 A4

Colour Coding

The aim of an equipment Colour Coding system is to prevent cross contamination during the cleaning process. It is vital that a system forms part of employee training programme.

The Colour Coding of cleaning equipment is a simple but important step that will make a large contribution to hygiene standards and the elimination of cross infection.

BLUE
General low risk areas

GREEN
General food and bar use

RED
General Washroom

Yellow
Clinical

RED/WHITE
Best practice for sanitary appliances

Jangro Helpline 0845 458 5223 Jangro House, Wootton Bassett, Wootton Bassett, Wiltshire, BA4 9NL Tel: 01204 795955 Fax: 01204 576801 www.jangro.net

Colour Coding

XA156 A4

Safety First

ARE YOU PROTECTED WHEN USING CHEMICALS?

EMERGENCY ACTION

EYE CONTACT
Rinse cautiously with water for several minutes. Remove contact lenses, if present and easy to do. Continue rinsing. Get immediate medical advice/attention.

INHALATION
Remove victim to fresh air and keep at rest in a position comfortable for breathing. Call a poison centre or doctor/physician if you feel unwell.

SKIN CONTACT
Wash skin with plenty of water. Remove/soak off immediately all contaminated clothing. Get immediate medical advice/attention.

INGESTION
If swallowed, rinse mouth. Do NOT induce vomiting. Call a poison centre or doctor/physician if you feel unwell.

WHAT DO THE CLP/GHS HAZARD SYMBOLS MEAN?

HAZARDOUS TO THE ENVIRONMENT, Acute toxicity, Corrosive, Carcinogenic, Explosive, Flammable, Health hazard, Irritant, Serious health hazard.

STAY SAFE. ALWAYS USE CHEMICALS RESPONSIBLY

www.jangro.net

Safety First

XA186 A3

KEEP SAFE DISTANCE

Jangro

INFECTION CONTROL SUPPORT

Social Distancing Floor Mats

Self-Adhesive Floor Stickers

2m

Ask for a copy of our Infection Control Support for social distancing signs and matting.

Training Guide Support



Area Cleaning Charts

Floor Care

FOR: VINYL, THERMOPLASTIC, RUBBER, LINOLEUM, COMPOSITION, ASPHALT, TERRAZZO, SEALED WOOD & SEALED CORK FLOOR SURFACES.

SAFETY FIRST

ALWAYS read, understand and adhere to label instructions and dilution rates, always using any chemicals.

NEVER MIX CHEMICALS.

Take care when handling and diluting products.

FOUR-STEP PROCESS:

1. Sweep and dust.
2. Apply Jangro Floor Care.
3. Apply Jangro Floor Care.
4. Buff with a buffing machine.

FOUR-STEP APPLICATION:

1. Sweep and dust.
2. Apply Jangro Floor Care.
3. Apply Jangro Floor Care.
4. Buff with a buffing machine.

MAINTENANCE:

SAFETY WEAR AND EQUIPMENT REQUIRED:

- SWEEPING MOP OR BRUSH
- HIGH SPEED MACHINE
- BUCKET AND SPRAY BOTTLE
- SPRAY BOTTLE

Toilet & Washroom

Put on safety wear. Rubber gloves should be worn. Check, clean & refill soap, toilet tissue, paper and roller dispensers. Sweep floor and empty waste bins.

SAFETY FIRST

ALWAYS read, understand and adhere to label instructions and dilution rates, always using any chemicals.

NEVER MIX CHEMICALS.

Take care when handling and diluting products.

DAILY CLEANING:

Product choice: Jangro

Rooming

Bactericidal Cleaner

Perfumed Toilet Cleaner

Glass & Mirror Cleaner

WEEKLY CLEANING:

Product choice: Jangro

Toilet Descaler

Acidic Toilet Cleaner

Rooming

Bactericidal Cleaner

Perfumed Toilet Cleaner

Glass & Mirror Cleaner

Housekeeping & Bar Area

Product Code	Product Name	Directions	Hazard
B0045	Lemon Floor Gel	Apply to wet floor. Dilute 1:10 in warm water. Apply with sponge or cloth.	CAUTION
B0035	Hardwood Floor Maintainer	Apply two thin coats with a spray bottle or brush. Allow to dry for 24 hours. Apply every 3-6 months.	WARNING
B0055	High Traffic Floor Polish	Use undiluted. Four parts into a bucket or tray. Rub mop or applicator into polish. Lightly buff with a dry cloth.	No Significant Hazard
B0065	Floor Polish Remover	Apply to floor. Rub with a mop or machine. Allow to dry for 24 hours. Apply every 3-6 months.	CAUTION
B0075	Glass and Mirror Cleaner	Apply to glass. Rub with a cloth. Allow to dry for 24 hours. Apply every 3-6 months.	WARNING
B0085	Glass and Mirror Cleaner	Apply to glass. Rub with a cloth. Allow to dry for 24 hours. Apply every 3-6 months.	No Significant Hazard
B0095	Glass and Mirror Cleaner	Apply to glass. Rub with a cloth. Allow to dry for 24 hours. Apply every 3-6 months.	CAUTION
B0105	Glass and Mirror Cleaner	Apply to glass. Rub with a cloth. Allow to dry for 24 hours. Apply every 3-6 months.	No Significant Hazard
B0115	Glass and Mirror Cleaner	Apply to glass. Rub with a cloth. Allow to dry for 24 hours. Apply every 3-6 months.	CAUTION
B0125	Glass and Mirror Cleaner	Apply to glass. Rub with a cloth. Allow to dry for 24 hours. Apply every 3-6 months.	No Significant Hazard
B0135	Glass and Mirror Cleaner	Apply to glass. Rub with a cloth. Allow to dry for 24 hours. Apply every 3-6 months.	CAUTION
B0145	Glass and Mirror Cleaner	Apply to glass. Rub with a cloth. Allow to dry for 24 hours. Apply every 3-6 months.	No Significant Hazard
B0155	Glass and Mirror Cleaner	Apply to glass. Rub with a cloth. Allow to dry for 24 hours. Apply every 3-6 months.	CAUTION
B0165	Glass and Mirror Cleaner	Apply to glass. Rub with a cloth. Allow to dry for 24 hours. Apply every 3-6 months.	No Significant Hazard
B0175	Glass and Mirror Cleaner	Apply to glass. Rub with a cloth. Allow to dry for 24 hours. Apply every 3-6 months.	CAUTION
B0185	Glass and Mirror Cleaner	Apply to glass. Rub with a cloth. Allow to dry for 24 hours. Apply every 3-6 months.	No Significant Hazard
B0195	Glass and Mirror Cleaner	Apply to glass. Rub with a cloth. Allow to dry for 24 hours. Apply every 3-6 months.	CAUTION
B0205	Glass and Mirror Cleaner	Apply to glass. Rub with a cloth. Allow to dry for 24 hours. Apply every 3-6 months.	No Significant Hazard

Floor Care

XA151 A3

Toilet and Washroom

XA153 A3

Housekeeping & Bar Area

XA162 A3

LMS Training

Training and information at your fingertips...

Jangro Learning Management Solution (LMS) is a fully interactive suite of e-Learning modules which can be accessed online to ensure all staff are fully trained quickly and efficiently.



the Jangro LMS
learning management solution

CPD CERTIFIED
The CPD Certification Service

www.jangrolms.net

Courses Available

Carpet Care

Colour Coding & Infection

Control

COSHH Awareness

Floor Care

Health & Safety

Housekeeping

Introduction to Cleaning

Introduction to Equipment

Kitchen Hygiene

Manual Handling

Sharps Handling

Stay Safe Online

Washroom Hygiene



www.jangro.net