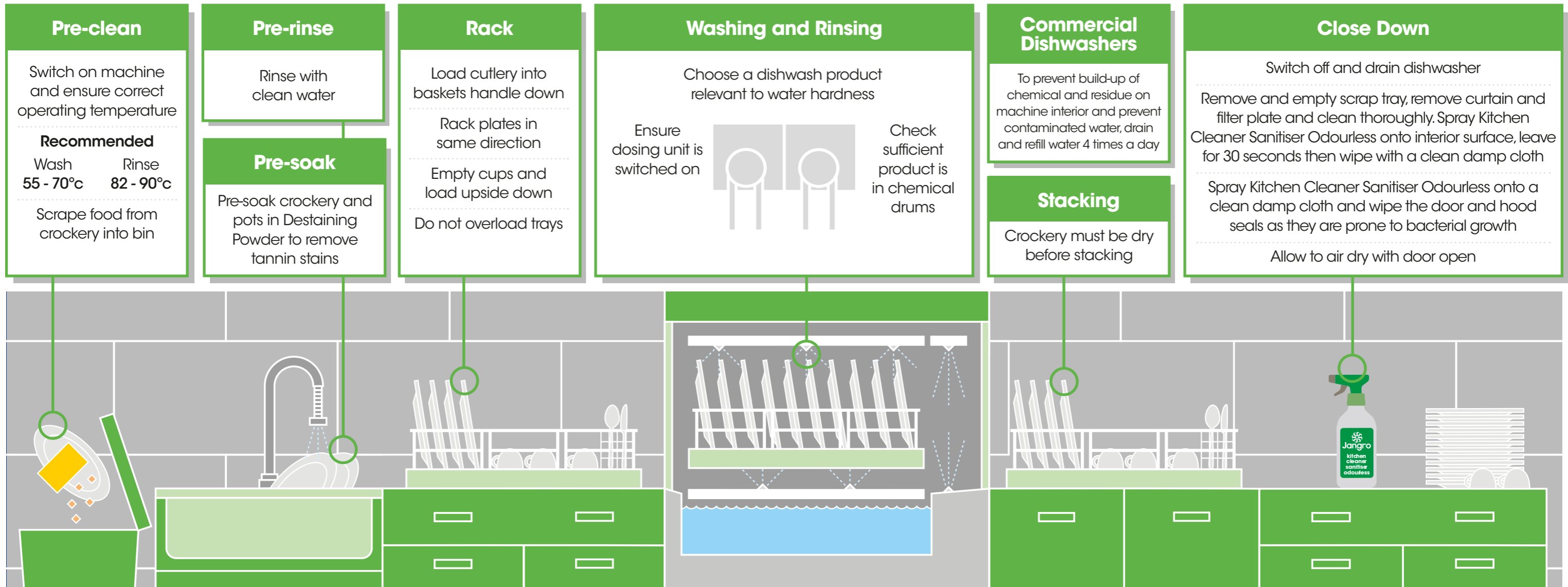


Dishwashing Guide



<p>Dishwash Detergent for Hard Water BB070 For use in hard water</p>	<p>Dishwash Detergent for Softened Water BB075 For use in softened water</p>	<p>Chlorinated Dishwash Detergent BB080 For use in soft water or in conjunction with an effective water softener</p>	<p>Dishwash Rinse Aid BB085 For use in all water conditions</p>	<p>Granular Salt BB092</p>	<p>Tablet Salt BB096</p>	<p>Catering Descaler BB025-5 For removing heavy limescale and general soiling</p>	<p>Destaining Powder BB110-10 For removing tannin stains from crockery, tea urns and utensils</p>	<p>Kitchen Cleaner Sanitiser BB010-5/75 Removes general soiling from a variety of hard surfaces and kills a wide range of bacteria</p>	<p>K4 Kitchen Sanitiser BB470-1 Concentrated unperfumed solution for multi-purpose cleaning and disinfecting.</p>
---	---	---	--	---------------------------------------	-------------------------------------	--	--	---	--