

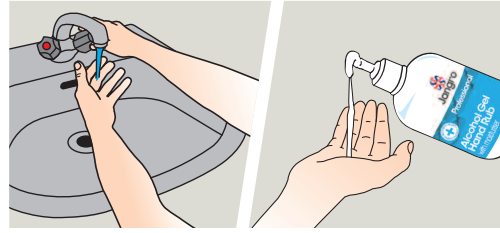


Process for Infection Control

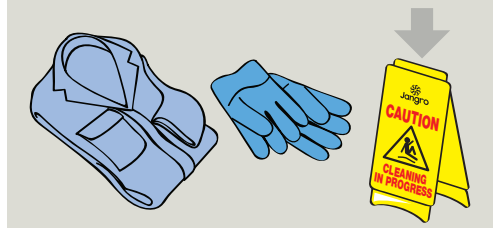
Products used: Chlorine Tablets, Medical Sanitiser/Cleaner Disinfectant

Professional

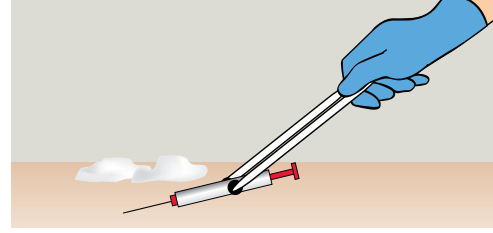
Infection Control - effective against bacteria including MRSA (EN1276)



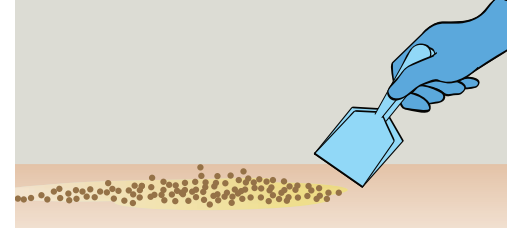
1 Wash hands with antibacterial soap and water, then sanitise with alcohol gel.



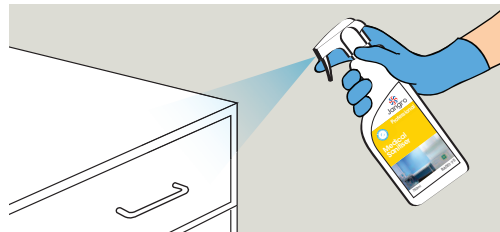
2 Put on disposable PPE and place safety signs.



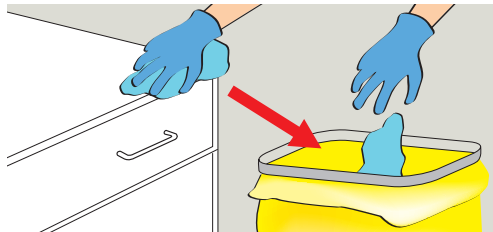
3 Ensure any sharps and other hazardous waste is removed safely into a sharps container.



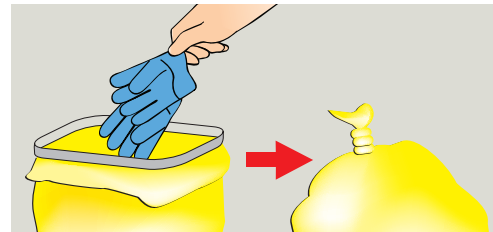
4 Safely remove any body fluid spills with absorbent granules and a disposable scoop.



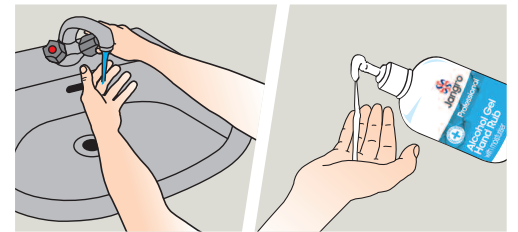
5 Spray all surfaces and equipment with Jangro Medical Sanitiser or Cleaner Disinfectant. Leave for recommended contact time.



6 Wipe thoroughly with a disposable wipe or cleaning cloth. Replace cloth with new as soon as contaminated with soiling.

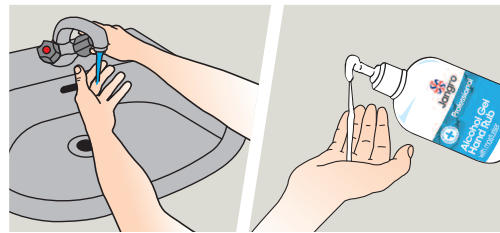


7 Place all waste including any used cloths and disposable PPE in waste bag for appropriate disposal. Seal bag before leaving area.

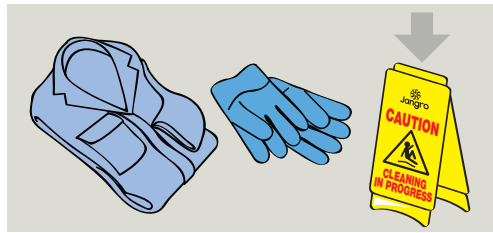


8 Wash hands with antibac soap & then dry with disposable towel & when dry, alcohol sanitiser can be applied.

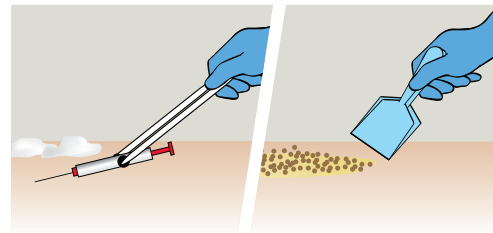
Cleaning potentially infectious areas of E-coli, Clostridium difficile or H.I.V



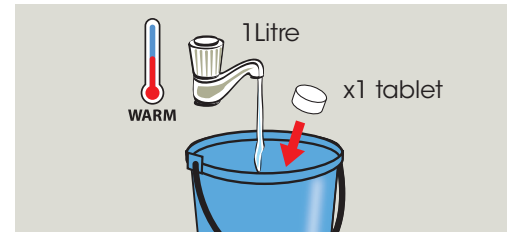
1 Wash hands with antibacterial soap and water then sanitise with alcohol gel.



2 Put on disposable PPE and place safety signs. Some infections can become air-borne - Please wear a mask!



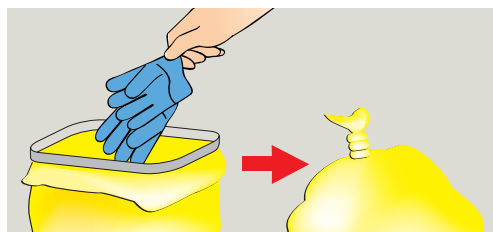
3 Ensure any sharps and other hazardous waste is removed safely into a sharps container. Remove any body fluid spills with absorbent granules and a disposable scoop.



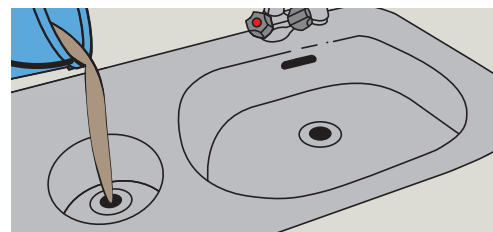
4 Make up a solution of CHLORINE TABLETS diluted 1000ppm or 1 tablet per 1 litre warm water.



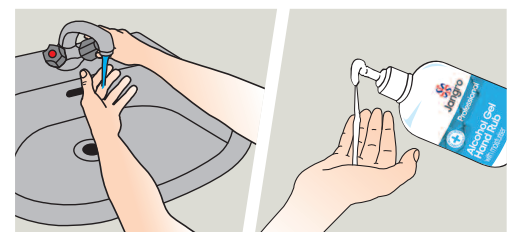
5 Wipe surface and equipment with the solution of CHLORINE TABLETS leave for the recommended contact time, then wipe with a clean disposable cloth.



6 Place all waste including any used cloths and disposable PPE in waste bag for appropriate disposal. Seal bag before leaving area.

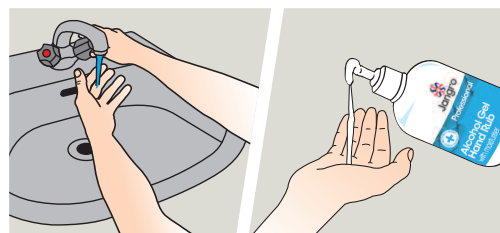


7 Dispose of solution after each use/day. Dispose of via appropriate sluice/drain.

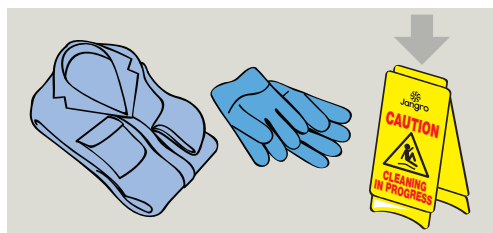


8 Wash hands with antibac soap & then dry with disposable towel & when dry, alcohol sanitiser can be applied.

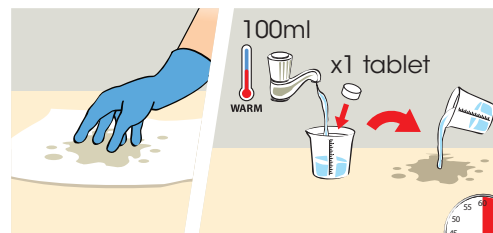
Potential outbreak of Norovirus



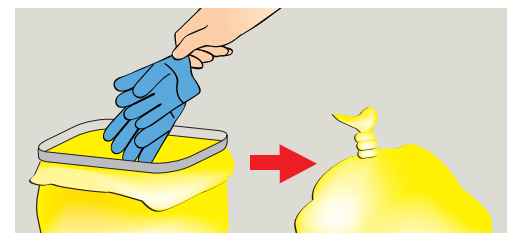
1 Wash hands with antibacterial soap and water then sanitise with alcohol gel.



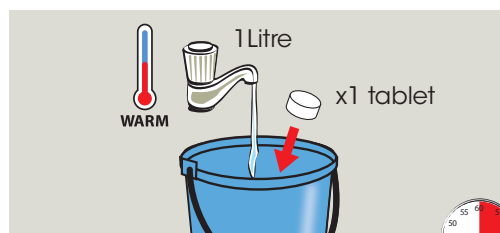
2 Put on disposable PPE and place safety signs. Some infections can become air-borne - Please wear a mask!



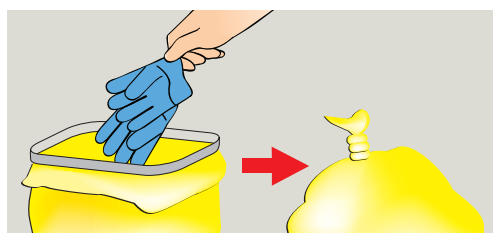
3 Blot affected area with an absorbent material, then pour on a solution of CHLORINE TABLETS diluted 10,000ppm (1 tablet per 100ml warm water). Leave for 30 minutes or longer if possible.



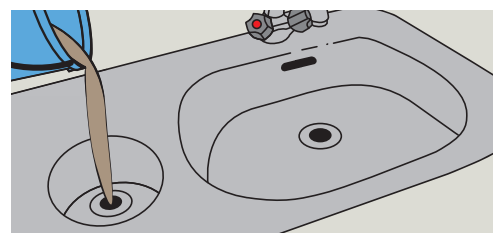
4 Place all solid waste and body fluid including any used cloths and disposable PPE in waste bag for appropriate disposal.



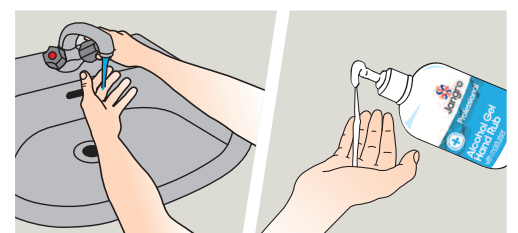
5 Disinfect again with a solution of CHLORINE TABLETS diluted 1000ppm (1 tablet per 1 litre warm water). Again leave for 30 minutes or longer if possible then wipe with a disposable cloth.



6 Place all waste in waste bag. Seal bag and place in appropriate area for disposal.



7 Dispose of solution after each use/day. Dispose of via appropriate sluice/drain.



8 Wash hands with antibac soap & then dry with disposable towel & when dry, alcohol sanitiser can be applied.



Chlorine Tablets are not recommended for use on soft furnishings, carpets or on items of clothing.