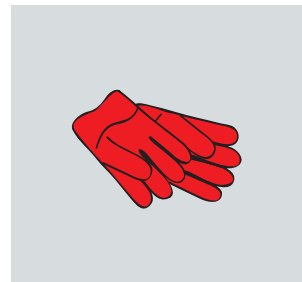


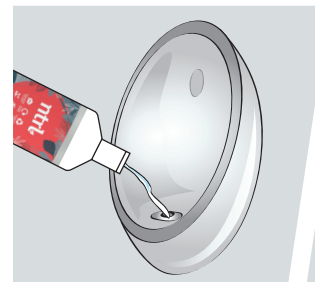
## BF021-1 Daily Toilet Cleaner 1L



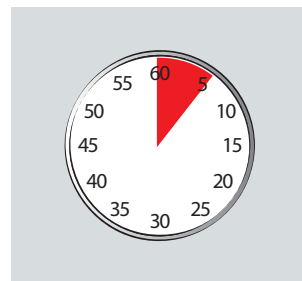
**1** Use appropriate PPE as indicated in the Safety Data Sheet.



**2** Place Safety Signs.



**3** Push back water and apply undiluted solution to the urinal, toilet bowl and under the rim.



**4** Leave for a few minutes.



**5** Agitate with brush if necessary.



**6** Flush with clean water.



**7** Remove Safety Signs.

### Areas of Use



Scan me for further product details including COSHH Safety Data Sheet



Cleaning equipment must be cleaned with products from the ntrl range, do not mix with other cleaning chemicals.

# ntrl

www.jangro.net