

Enviro Floor Gel



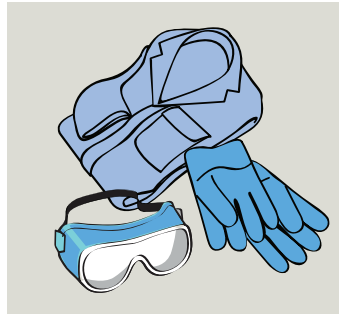
When dosing concentrate chemicals always use the recommended PPE, and always read the labels to check best practice for handling both the undiluted & ready to use solutions.

Product Usage Guide

enviro



BF101-5



1 Use appropriate PPE as indicated in the Safety Data Sheet.



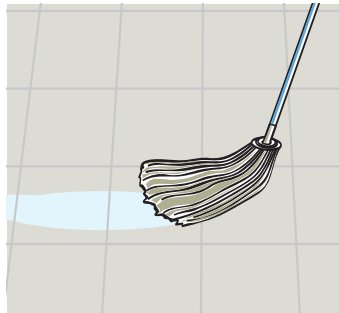
2 Place Safety Signs.



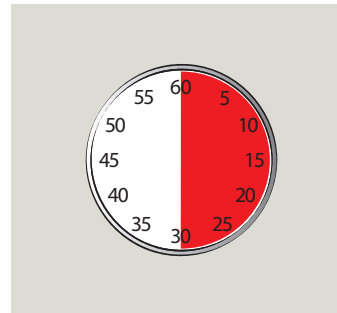
3 Sweep floor.



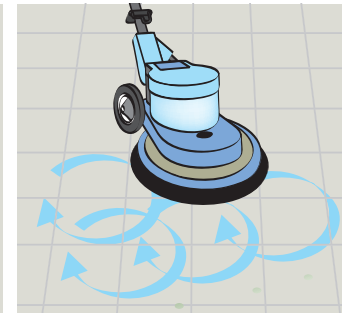
4 Dilute 50ml of solution per 5 litres of water in a bucket.



5 Mop/Spray floor.



6 Leave surface to dry.



7 When dry buff to a shine.



8 Remove Safety Signs.

Health & Safety

Please refer to relevant Safety Data Sheet



Scan for further product details



Do not use on unsealed wood and cork.

www.jangro.net