

## Product Usage Guide

Professional

### BA051-75



#### Health & Safety

Please refer to relevant COSHH Safety Data Sheet



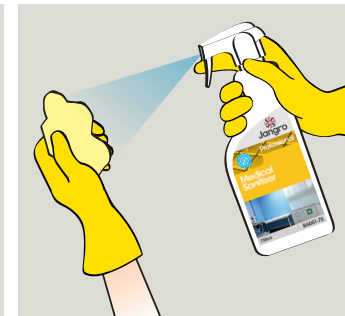
Scan for further product details



**1** Use appropriate PPE as indicated in the Safety Data Sheet.



**2** Place Safety Signs.



**3** Spray solution onto cloth.



**4** Wipe surface to be cleaned.



**5** Once surface is dry remove Safety Signs.